

Y3000(U3000) Series

Routine Inspection (Calibration) Notice

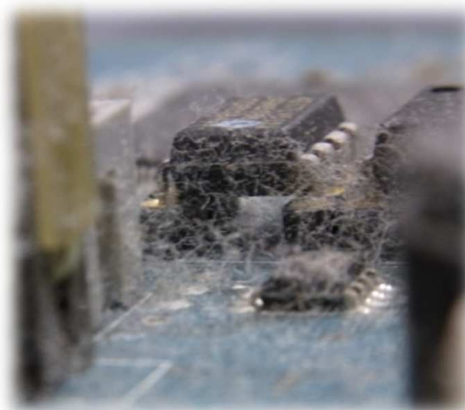
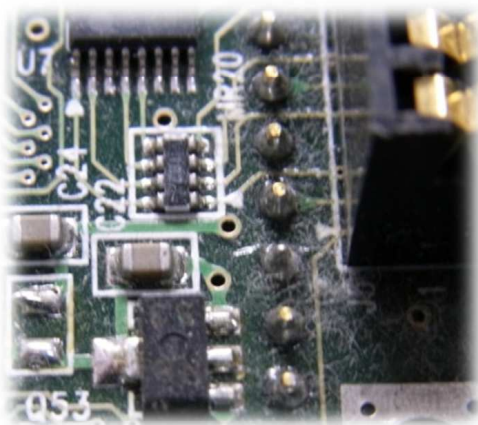
Wave Technology recommends a routine annual inspection (calibration) for long-term use and to maintain the quality and safety of our products.

After more than one year of use, an accumulation of dust inside our products may lead to manufacturing and machine failures.

During the routine inspection (calibration), we will not only perform a general checkup such as measuring the output voltage of each power supply and checking each function but also cleanup of the internal parts of the machine. Upon completion, we will send back the machine with the results of the routine inspection.



Before cleanup

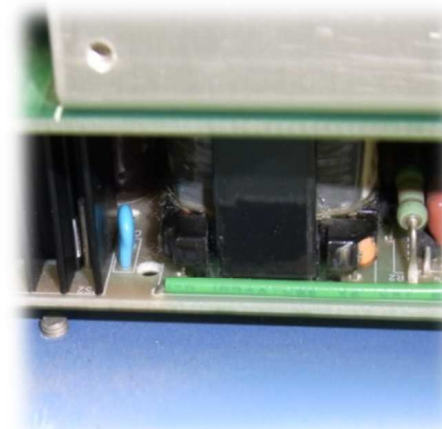
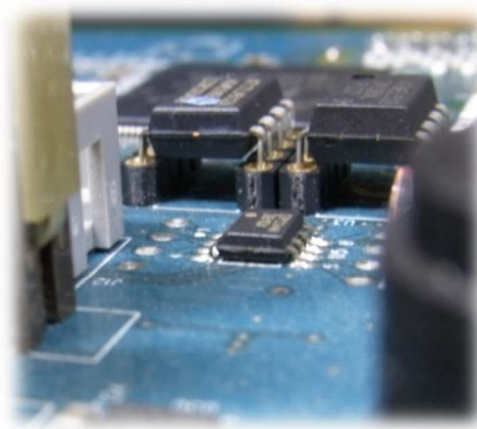
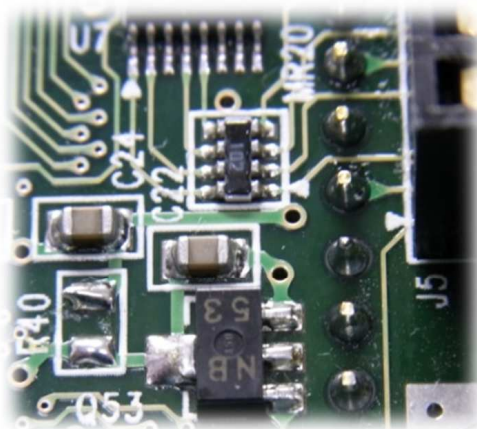


Risk of short circuit from dust

※ Level of dust accumulation will vary depending on the environment



After cleanup



Depending on the environment,
the following symptoms may develop

- Power-supply voltage malfunction
- Degradation and damage of connectors or other parts
- Short circuit of the interior parts or the wirings



- Increased failure rate
- Damage in the main writer device
- Damage to the IC device



- **Decrease in productivity**



Through routine
inspection (calibration)

- Detection of damaged parts
- Preventative measures against malfunctions



- **Maintain product quality**
- **Maintain productivity**

< Routine Inspection (Calibration) Details >

- Acceptance inspection – Exterior check, operation verification (memory test, device operation test, etc.)
- Thorough cleaning – Clean each part and visually inspect for damage.
- Validation – memory, driver, power-supply voltage, device tests
- Generate inspection report

※ Standard equipment used for the inspection is inspected by an external agency.

< Supporting Sites >

Wave Technology
1-35-3 Nishihara
Shibuya-ku Tokyo 151-0066
T E L : +81-3-5452-3101
F A X : +81-3-5452-3102
URL <http://www.wavetechnology.co.jp/>
E-Mail sales@wavetechnology.co.jp

電計貿易 (上海) 有限公司 【業務提携】
[中国]
上海市閔行区紫竹科学園區紫日路609号
TEL : +86-21-5820-5887
<http://www.c-denkei.cn>
Contact Persons : QIN LI RONG
E-mail : sh_lrqin@c-denkei.cn